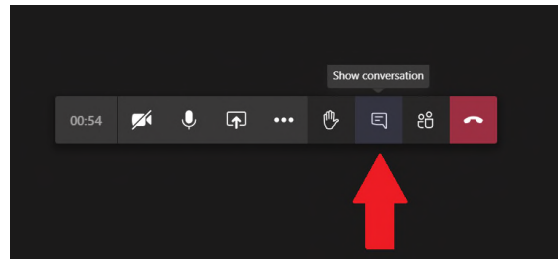


Welcome!



- If you are attending the webinar on your computer, please add your name, title, and organization(s) to the chat box.

- Bring your mouse to the lower part of the screen until a set of buttons appears. They may also be at the top of your screen.
- Click "Show Conversation."



1

Gloucester County, New Jersey Hazard Mitigation Plan – 2022 Update

Planning Partnership Kick-Off Meeting | May 5, 2021

2



2

Hazard Mitigation – What is it?

Mitigation is a sustained action taken to reduce or eliminate long-term risk to life and property from a hazard event

-or-

Any action taken to reduce future disaster losses

“provides the blueprint for reducing the potential losses identified in the risk assessment, based on existing authorities, policies, programs and resources, and local ability...” (CFR).



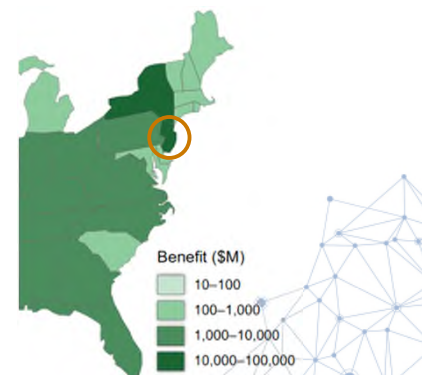
5

Hazard Mitigation Works!

- According to the January 2019 National Institute of Building Sciences Natural Hazard Mitigation Saves: 2018 Interim Report, federal mitigation grants save \$6 for every \$1 spent!

National Benefit-Cost Ratio Per Peril <small>*BCR numbers in this study have been rounded</small>	
Overall Hazard Benefit-Cost Ratio	6:1
Riverine Flood	7:1
Hurricane Surge	Too few grants
Wind	5:1
Earthquake	3:1
Wildland-Urban Interface Fire	3:1

Mitigation saves in every in state! New Jersey has saved up to \$100 million in benefits.



6

Why Update?

- The mitigation plan update will:
 - Help the County prepare for and mitigate the effects of disasters
 - Continue to allow the County and participating partners to be eligible for pre- and post-disaster mitigation funding
 - Support CRS participation/rating of municipalities

Hazard	Losses
Blizzard	\$500,000
Coastal Flood	\$1.8 million
Drought	\$40 million (crop)
Excessive Temperature	-
Flash Flood	\$5.15 million (property) \$400,000 (crop)
Flood	\$13.4 million
Hail	\$5 million (crop)
High Wind	\$11.5 million
Hurricane/Tropical Storm	\$500,000
Lightning	\$218,000
Thunderstorm	\$19.9 million (property) \$100,000 (crop)
Tornado/Funnel Cloud	\$675,000
Wildfire	\$50,000
Winter Storm	\$3.5 million
TOTAL	\$57.5 million (property) \$45 million (crop)

Source: NOAA-NCEI 2021

7

What's at Risk?

- FEMA Disaster Declarations

Year of Declaration Date	Declaration Title	Disaster Number
1965	WATER SHORTAGE	205
1971	HEAVY RAINS & FLOODING	310
1975	HEAVY RAINS, HIGH WINDS, HAIL & TORNADOES	477
1977	ICE CONDITIONS	528
1980	WATER SHORTAGE	3083
1993	SEVERE BLIZZARD	3106
1996	BLIZZARD OF 96 (SEVERE SNOW STORM)	1088
1999	HURRICANE FLOYD EMERGENCY DECLARATIONS	3148

Year of Declaration Date	Declaration Title	Disaster Number
2000	WEST NILE VIRUS	3156
2001	FIRES AND EXPLOSIONS	3169
2003	SNOW	3181
2005	HURRICANE KATRINA EVACUATION	3257
	SEVERE STORMS AND FLOODING	1588
2007	SEVERE STORMS AND INLAND AND COASTAL FLOODING	1694
2010	SEVERE STORMS AND FLOODING	1097
	SEVERE WINTER STORM AND SNOWSTORM	1889
	SNOWSTORM	1073

Year of Declaration Date	Declaration Title	Disaster Number
2011	SNOWSTORM	1073
	HURRICANE IRENE	3332
		4021
2012	SEVERE STORMS AND FLOODING	4033
	HURRICANE SANDY	3354
		4066
2015	SEVERE STORM	4231
2020	COVID-19	3451
	COVID-19 PANDEMIC	4400



6 Hurricane



5 Severe Storm(s)



5 Snow



2 Biological



2 Drought



2 Flood



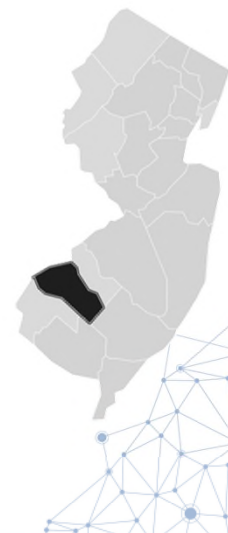
1 Fire



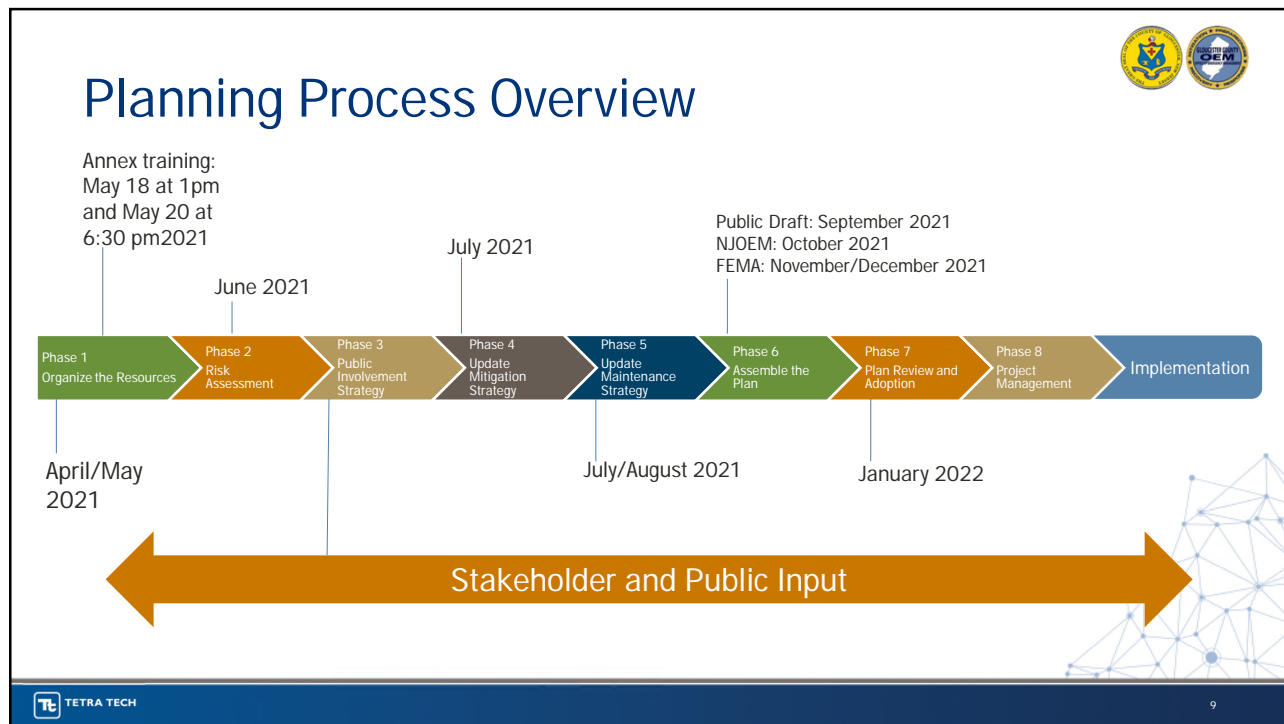
1 Other



1 Severe Ice Storm



8



9



10

We Need YOU Engaged and Involved!

- Developed a website just for the HMP - <https://www.gloucestercountynjhmp2021.com/>
- Social Media Blasts – content and graphics will be sent out
- Surveys – public, stakeholder, and neighbors
- Local announcements of HMP update – local papers, municipal newsletters, etc.
- Local public meetings
- Draft plan review
- Document each and every time this is done!



Why conduct outreach?

- ✓ Informs and educates about hazards and risks
- ✓ Invites interested parties to contribute their views and ideas for mitigation
- ✓ Identifies conflicts and incorporates different perspectives and priorities early in the process
- ✓ Provides data and information that improves overall quality and accuracy of the plan
- ✓ Ensures transparency and builds trust
- ✓ Maximizes opportunities for implementation through greater consensus and acceptance

Public and Stakeholder Outreach

Correspondence Type	Meeting Name, Municipality	Date	Start Time	End Time	# of Hours	Agenda/Sign In?	Notes (include meeting topic, how HMP was discussed, etc.)
Press Release	Countywide						Press release issued to several local newspapers

Municipal Planning Partnership



- All municipalities are encouraged to actively participate (and continue to be covered by the countywide HMP).

Participating = you remain eligible for pre- and post-disaster mitigation funding!

- FEMA has greatly expanded their scrutiny of 'participation' since your last plan update...

How Do You Participate?



- Submit Letter of Intent to Participate (LOIP)
 - LOIPs are required from each municipality
 - It outlines expectations and responsibilities for participating jurisdictions and identifies points of contact
 - If you haven't returned it yet, please do so ASAP!
- Assist with the development of your jurisdictional annex
- Attend planning partnership meetings/workshops – like this one!
- Provide data and information in a timely manner
- Support public and stakeholder outreach in your jurisdiction
- Review and provide feedback on Draft and Final Plan documents
- Facilitate the adoption process – governing body must pass an Adoption Resolution
- Implement and Maintain the Plan

Assemble Your Team!

If you not fully decided who should be on your municipal mitigation team, the following could provide you a better idea on who to invite:

- NFIP Floodplain Administrator
- Building Code Official
- Engineer
- Land Use Planner
- Clerk
- Mayor/Administrator
- Municipal CFO/Fiscal Representative
- Public Works Superintendent/Director
- Police/Fire Official



15

Update Annexes with Your Mitigation Team

- Attend one of the two Annex Development Workshops:
 - May 18th at 1 pm
 - May 20th at 6:30 pm
- Complete annex tasks (return Word documents)
- Focus on first 8 tasks
 - Each task has an identified lead
 - Critical asset review **due May 19th**
 - All others **due June 2nd**




National Mitigation Plan 2020 Update
 GLoucester COUNTY, NJ
 Annex Development Checklist

Please send all electronic Word versions by **June 2nd** to:
 Chris Huch, Tetra Tech | chris.huch@tetra-tech.com

Task	Who is responsible for completion?	Where do you find the required information?	Resources for Assist	Deadline
1. Review critical facilities and identify	Entire mitigation team	Word doc of facilities and Survey 123	Knowledge being working in county	May 18
2. Identify problem hazard areas in your community	Entire mitigation team	Survey 123	Historic impacts, Critical assets	June 2
3. Hazard Event History Worksheet	CDM Coordinator	Worksheet 4	Historic impacts	June 2
4. Capability Assessment and Integration Worksheet	Planner*	Worksheet 5	EMMA Project Worksheets, CDM reports, Hazard response, Code Book, or Code, Municipal Ordinances, Master Plan, Clerk, Engineer, Planner, Administrator	June 2
5. NIP Floodplain Administrator Worksheet	Floodplain Administrator	Worksheet 6	NIP records	June 2
6. Mitigation Action Progress	Engineer*	Worksheet 7	Grants, capital improvement records	June 2
7. Building Permit	Building Department	Worksheet 8	Redevelopment Plans, Permits	June 2
8. New Development Review and Anticipation	Planner	Survey 123	Master Plan, Redevelopment plans, permits, build-out analysis	June 2
9. Hazard Ranking Worksheet	Entire mitigation team	Worksheet 9	Risk assessment reports - to be submitted in July	End of June
10. Mitigation Action Worksheet	Entire mitigation team	Worksheet 10	Mitigation Action - to be submitted in July	End of July
11. Review draft Annex	Entire mitigation team	Draft annex	To be supplied	Mid-September
12. Send email with approval annex can be printed for public review	Mayor/Alternate MOC	N/A	Mitigation Team to email annex approval	End of September

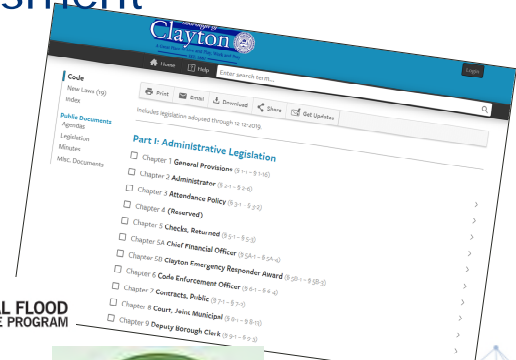
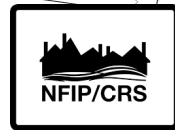
*If you do not have the person on staff, please direct to the best person in your community.

16

Conduct Your Capability Assessment

- Planning and Regulatory Capability
- Building Code
- Administrative and Technical Capability
- Fiscal Capability
- Education and Outreach
- Community Classifications
- Adaptive Capacity

Use Worksheet B to update; to be included in your municipal annex



Community Lifelines

- Review 2016 critical facility inventory to ensure complete
- Crosswalk and identify lifelines

Lifelines provide indispensable service that enables the continuous operation of **critical business** and **government functions**, and is critical to **human health and safety**, or **economic security**

Critical Facilities are those facilities considered critical to the health and welfare of the population and that are especially important following a hazard. As defined for this HMP, critical facilities include essential facilities, transportation systems, lifeline utility systems, high-potential loss facilities, and hazardous material facilities.

Essential facilities are a subset of critical facilities that include those facilities that are important to ensure a full recovery following the occurrence of a hazard event. For the County risk assessment, this category was defined to include police, fire, EMS, schools/colleges, shelters, senior facilities, and medical facilities.



Community Lifelines – Survey 123



- To add a new/missing critical facility or lifeline (that is not in the Word), add using this survey - <https://arcg.is/18HLXy0>

Gloucester County Critical Facilities and Lifelines

Please use this app to identify additional critical facilities or lifelines that were not provided in GIS databases. One survey response is needed for each new facility identified.

Your Name*

Your Agency/Dept/Municipality*

Name of Facility or Lifeline*

Type of Facility*

Please select the type that best fits the facility and add any comments if needed.

-Please Select-



19

2021 Hazards of Concern



- Coastal Erosion and Sea Level Rise
- Dam Failure/Levee Failure
- Disease Outbreak/Pandemic
- Drought
- Earthquake
- Extreme Temperature (heat/cold)
- Flood (riverine, storm surge, **stormwater/urban**)
- Geologic Hazards (landslides, subsidence, sinkholes)
- Hazardous Material Release (fixed-site and in-transit)**
- Hurricane/Tropical Storm**
- Invasive and Nuisance Species (geese, harmful algal bloom)**
- Nor'Easter**
- Severe Weather (hail, lightning, **straight-line wind, thunderstorms, tornadoes**)
- Severe Winter Weather (ice, snowstorms, blizzards)
- Wildfire



20

Update Risk Assessment

- Update Assets
- Examine Previous Impacts
- Analyze Risks
- Review with Steering Committee
- Risk Assessment Meeting - open to the public



21

Review Your Previous Mitigation Strategy

- What progress has been made on the 2016 HMP actions?
 - Completed?
 - If yes, describe funding source, funding amount, and details on the project and how it was completed.
 - No progress?
 - Describe why.
 - Is this project still a priority? If yes, we will include in the 2021/2022 Update.
 - If no, we will remove.

Use Worksheet D to complete. This will be reflected in your municipal annex.

22

Update Your Mitigation Strategy

- Determine status of 2016 Mitigation Actions
- Start with Problems
 - Areas that have been impacted
 - Recurring issues
 - RL/SRL properties need mitigating?
- Identify relevant mitigation actions/projects
- Attend the Mitigation Strategy Workshop
- Engage your community



- ✓ Goals – what do you want to achieve?
- ✓ Actions – what can be done to reduce risk?
- ✓ Plan – how will the actions be implemented?

23

New Mitigation Actions for the 2021/2022 Update

- Opportunity to add new mitigation actions
- This includes all in-progress grant applications (HMGP generators, CDBG acquisitions, etc.)
- Tips for the 2021 update:
 - Quality NOT quantity
 - Specific not general
 - What can realistically be accomplished in 5 years?
 - Identify your most important project



Plans and regulations
Include government authorities, policies, or codes that encourage risk reduction, such as building codes and state planning regulations. This may also include planning studies.



Natural systems protection projects minimize losses while also preserving or restoring the function of natural systems.



Structure and infrastructure projects involve modifying existing structures and infrastructure or constructing new structures to reduce the impact of hazards.



Education and awareness programs include long-term, sustained programs to inform and educate citizens and stakeholders about hazards and mitigation options. This category could also include training.

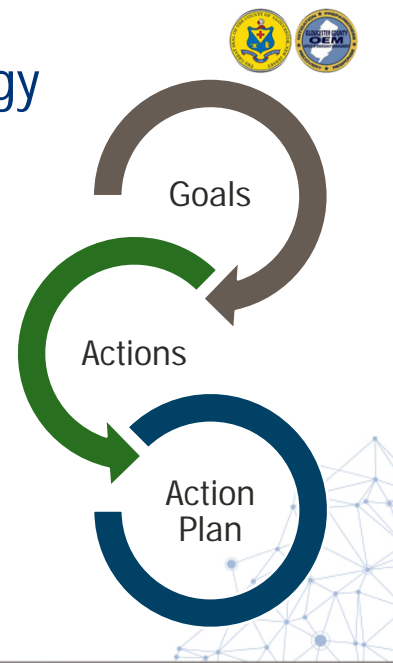


"At the first sign of a flood, you just push this little button."

24

Connection to the Mitigation Strategy

- Need a clear connection between vulnerability and proposed mitigation actions.
- Use the capability assessment to provide insight into challenges/opportunities for the mitigation strategy as well.
- Provide a factual basis for activities proposed in the mitigation strategy.



What We Need From You

- Attend ONE of the upcoming annex trainings next week
- Complete and return your worksheets
- Review and submit your critical facilities
- Start thinking about what new mitigation actions you would like to add to your mitigation strategy.

Annex Training #1 – Tuesday, May 18 @ 1:00 pm
OR

Annex Training #2 – Thursday, May 20 @ 6:30 pm

Schedule

- Planning Process
 - Planning Partnership Kick-Off –TODAY!
 - Annex Trainings (only attend one) –
 - Annex Training #1 – Tuesday, May 18 @ 1:00 pm
 - Annex Training #2 – Thursday, May 20 @ 6:30 pm
 - Task 1 (critical facilities) due May 19th; Tasks 2-8 due June 2nd
- Update Risk Assessment
 - Confirm critical facility/lifeline inventory by May 19th
 - Begin vulnerability assessment
 - Risk Assessment Meeting - late June 2021
- Public Involvement Strategy – ongoing throughout the planning process



27

Questions?



"Any questions?"

28



Gloucester County Project Contacts	
Dennis McNulty, Coordinator (856) 307-7100 dmcnulty@co.gloucester.nj.us	Chuck Murtaugh, Deputy Coordinator (856) 307-7100 cmurtaugh@co.gloucester.nj.us
Tetra Tech Project Contacts	
Heather Apgar, CFM, Project Manager (973) 630-8046 heather.apgar@tetratech.com	Chris Huch, CFM, Lead Planner (973) 630-8357 chris.huch@tetratech.com

Thank
You!